

Rigarus Construction, Inc.

Paul Panagapka founded Rigarus Construction, Inc. in 1999 after more than 25 years in the tower-construction industry.

The company, based in Elmira, ON, Canada, installs, repairs, and dismantles communication, lattice, and met towers, says Erin Campbell, Panagapka's assistant.

The company has completed a wide range of tower projects and is experienced with various designs, specifications, locations, and environments.

She explains that the company specializes in fabricating communication, lattice, and met towers for all terrains and in all seasons.

Turnkey Services

Besides tower fabrication, Campbell says the company provides turnkey services by supplying and erecting tower systems, as well as by participating in civil works, roads, and site clearing.

"I think the fact that we are a

Construction Service

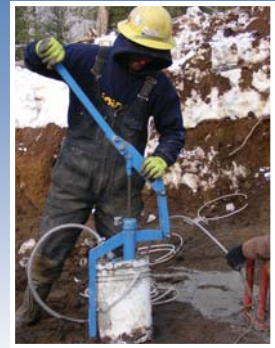
turnkey provider makes us an appealing choice, because we not only specialize in installing foundations and erecting towers, but we also perform maintenance and repairs, and much more," Campbell adds.

Rigarus also performs emergency and routine tower inspections, and performs minor, specified, and routine maintenance services.

The company has access to foundation materials, rock drills, a boom truck, and steel and construction equipment.

Although the company works primarily in Ontario, it also operates throughout Canada.

"We are aware of the impact the wind industry will have in the future, and we want to be a part of such an environmentally friendly approach to sustaining our planet," says Campbell.



20A Arthur Street North

Elmira, ON, Canada

N3B 2Z5

519-669-5040

FAX: 519-669-2440

www.rigarus.com

info@rigarus.com

Rigarus Construction, Inc. Highlights

Services

- Tower analysis
- Tower design and manufacturing
- Initial site inspection and layout
- Civil works, including completing roads, fences, shelters, generators, and foundations
- Microwave dish, antenna, and line installations
- Sweeping, path alignment, and antenna testing
- Complete installation of test wind energy masts and anchor foundations
- Setup and installation of monitoring devices